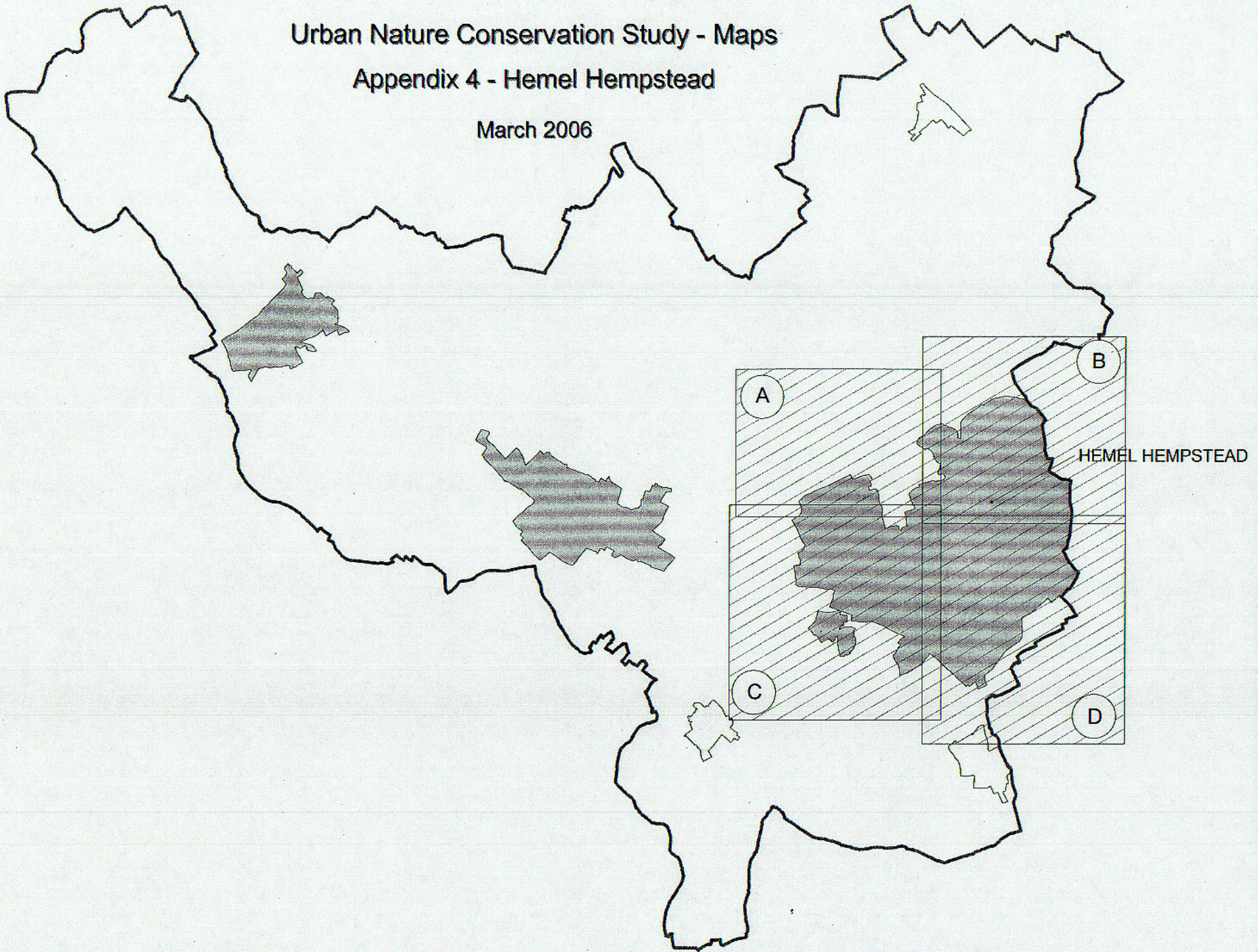
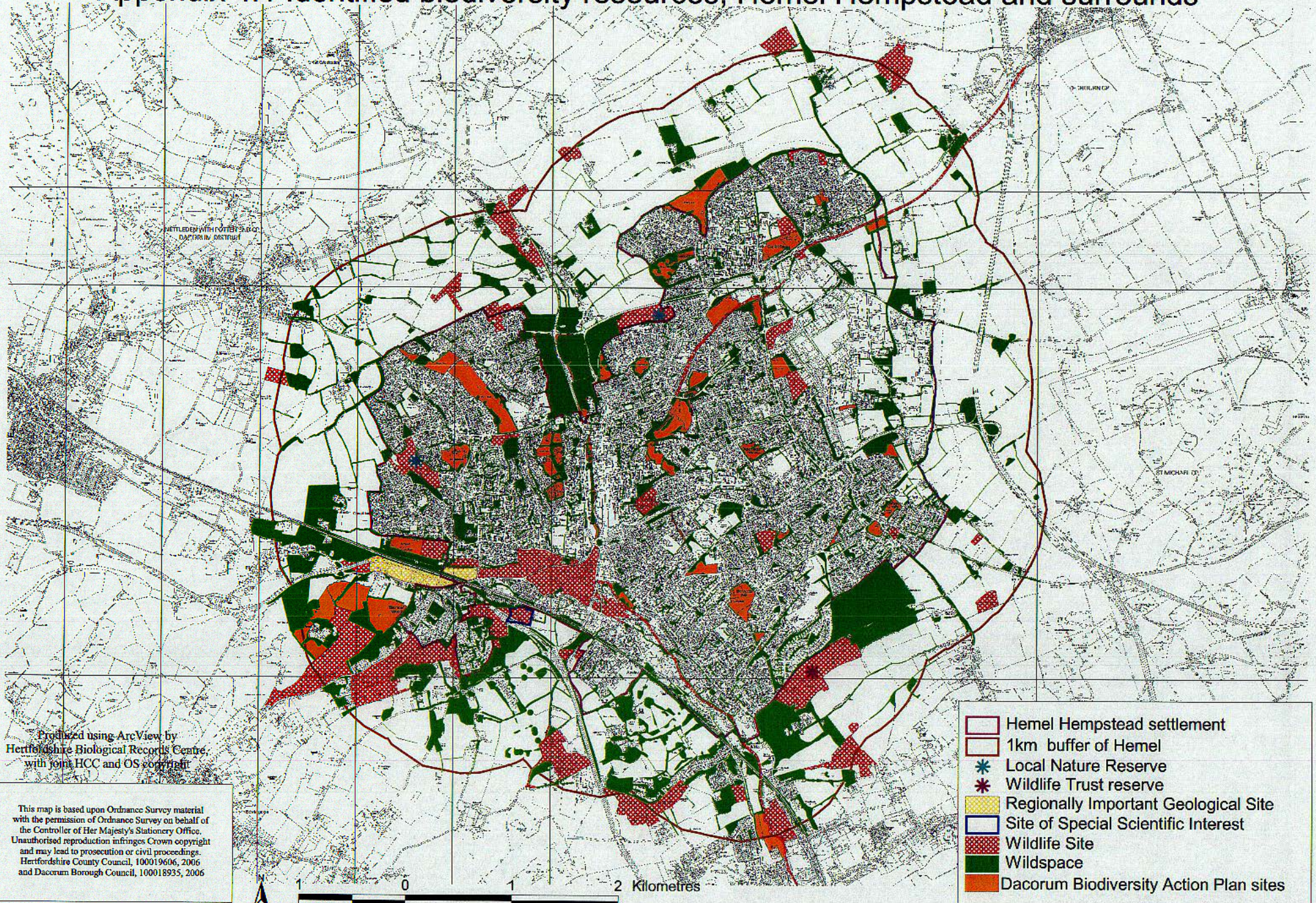


Urban Nature Conservation Study - Maps  
Appendix 4 - Hemel Hempstead

March 2006



# Appendix 4.1 Identified biodiversity resources, Hemel Hempstead and surrounds



Produced using ArcView, by  
Hertfordshire Biological Records Centre,  
with joint HCC and OS copyright







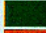

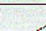
This map is based upon Ordnance Survey material  
with the permission of Ordnance Survey on behalf of  
the Controller of Her Majesty's Stationery Office.  
Unauthorised reproduction infringes Crown copyright  
and may lead to prosecution or civil proceedings.  
Hertfordshire County Council, 100019606, 2006  
and Dacorum Borough Council, 100018935, 2006

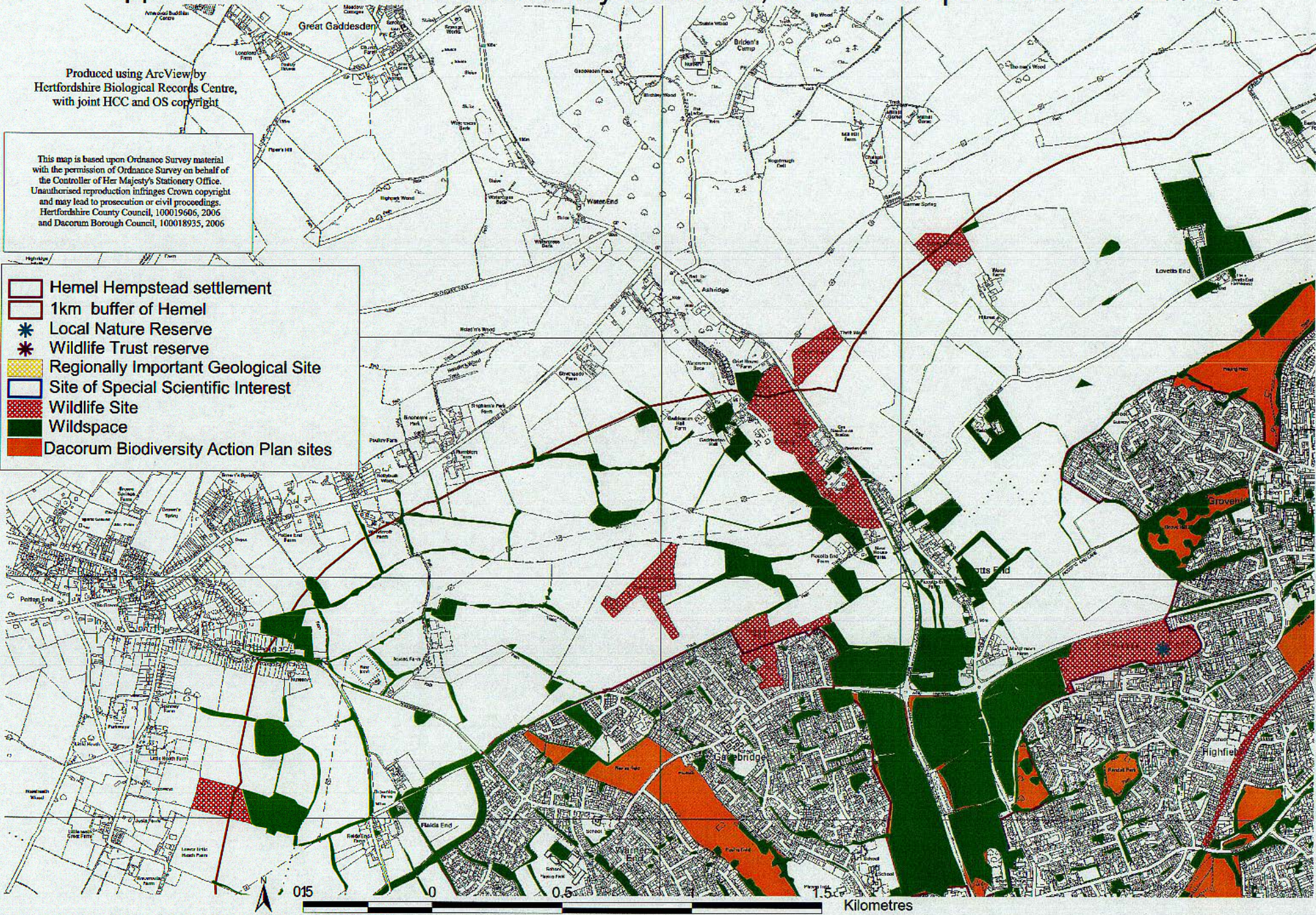
-  Hemel Hempstead settlement
-  1km buffer of Hemel
-  Local Nature Reserve
-  Wildlife Trust reserve
-  Regionally Important Geological Site
-  Site of Special Scientific Interest
-  Wildlife Site
-  Wildspace
-  Dacorum Biodiversity Action Plan sites

# Appendix 4.1 A Identified biodiversity resources, Hemel Hempstead and surrounds

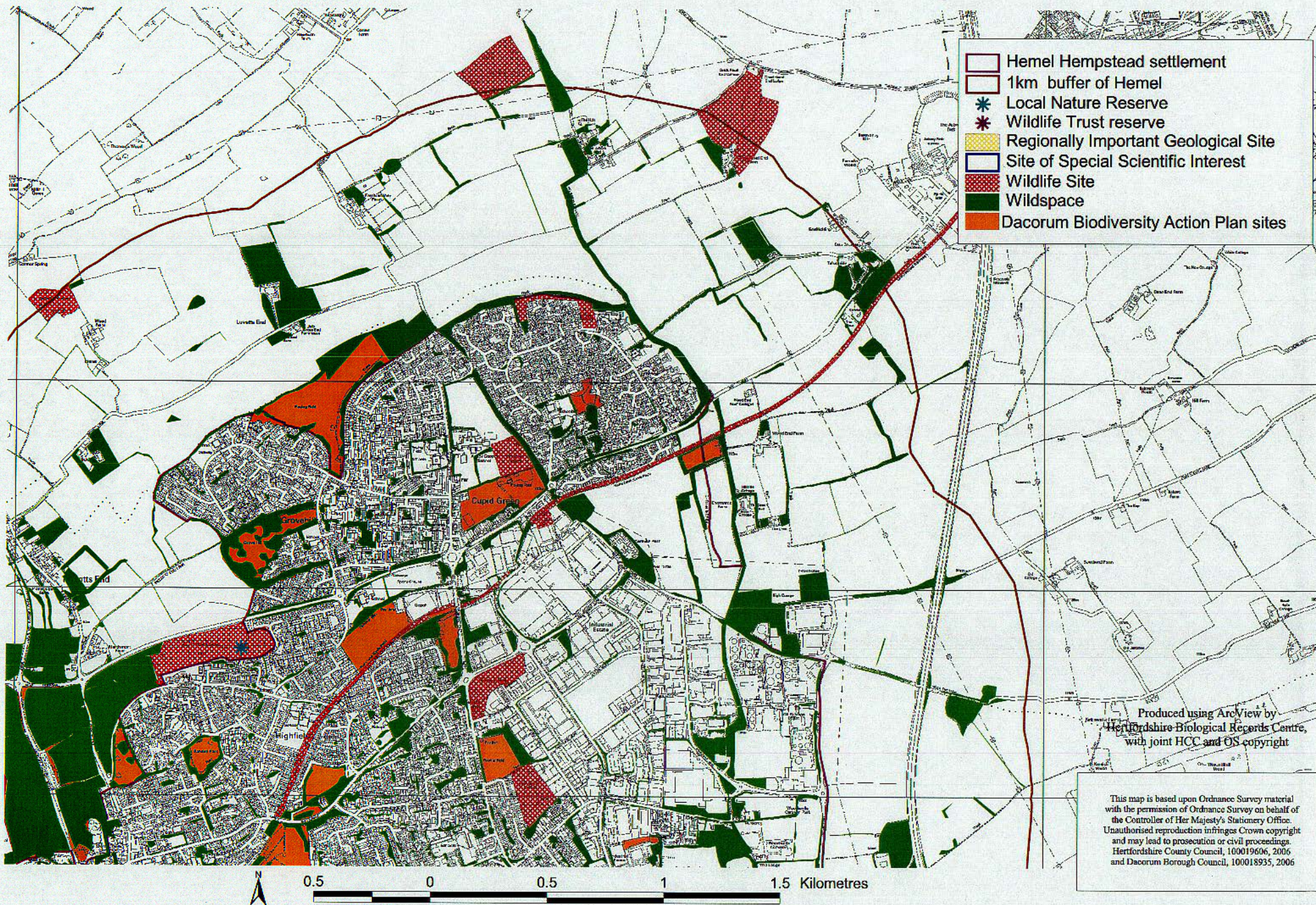
Produced using ArcView by  
Hertfordshire Biological Records Centre,  
with joint HCC and OS copyright

This map is based upon Ordnance Survey material with the permission of Ordnance Survey on behalf of the Controller of Her Majesty's Stationery Office. Unauthorised reproduction infringes Crown copyright and may lead to prosecution or civil proceedings. Hertfordshire County Council, 100019606, 2006 and Dacorum Borough Council, 100018935, 2006

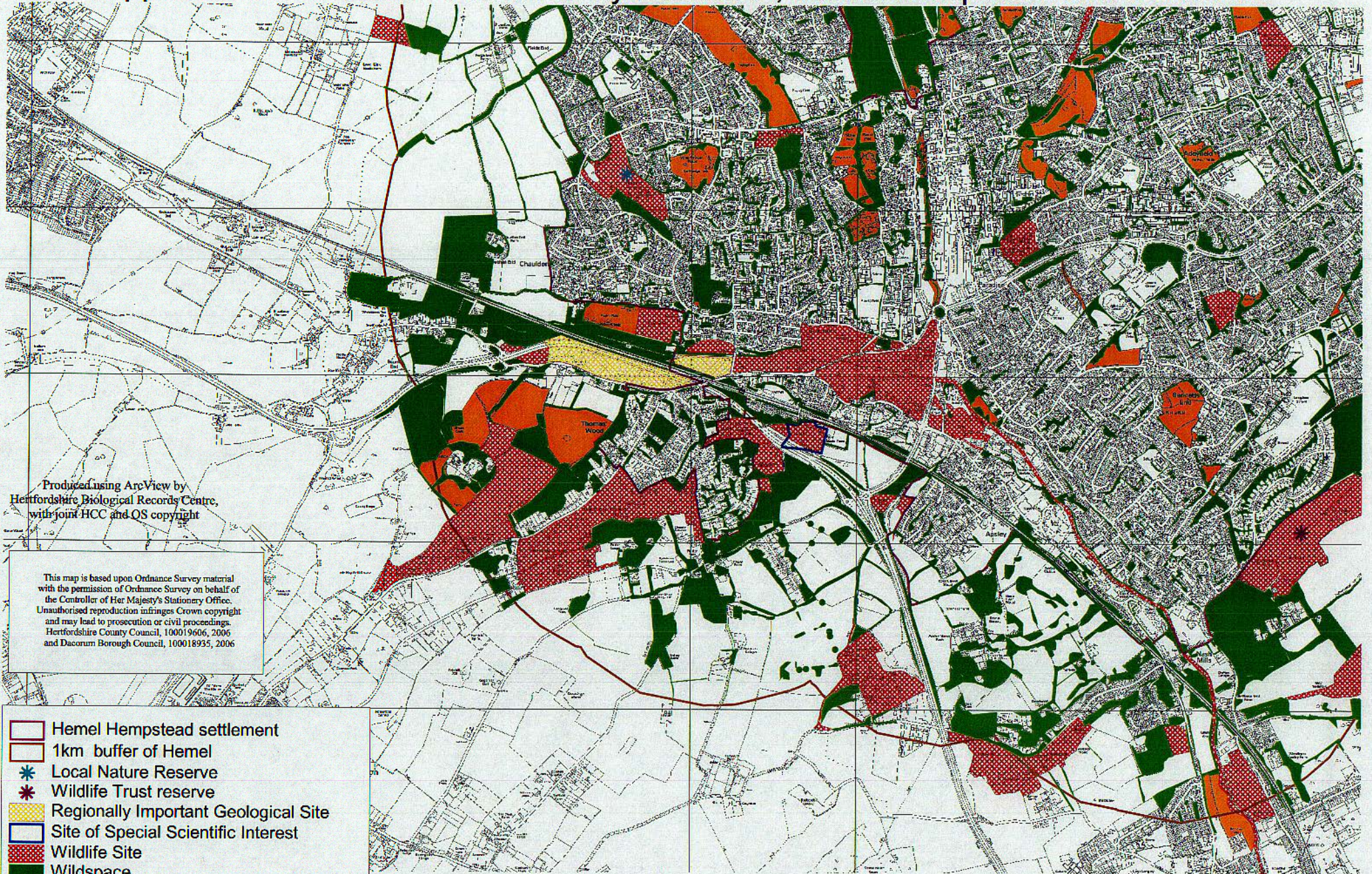
-  Hemel Hempstead settlement
-  1km buffer of Hemel
-  Local Nature Reserve
-  Wildlife Trust reserve
-  Regionally Important Geological Site
-  Site of Special Scientific Interest
-  Wildlife Site
-  Wildspace
-  Dacorum Biodiversity Action Plan sites



# Appendix 4.1 B Identified biodiversity resources, Hemel Hempstead and surrounds

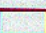










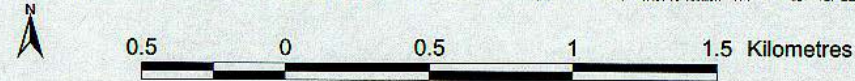
# Appendix 4.1 C Identified biodiversity resources, Hemel Hempstead and surrounds



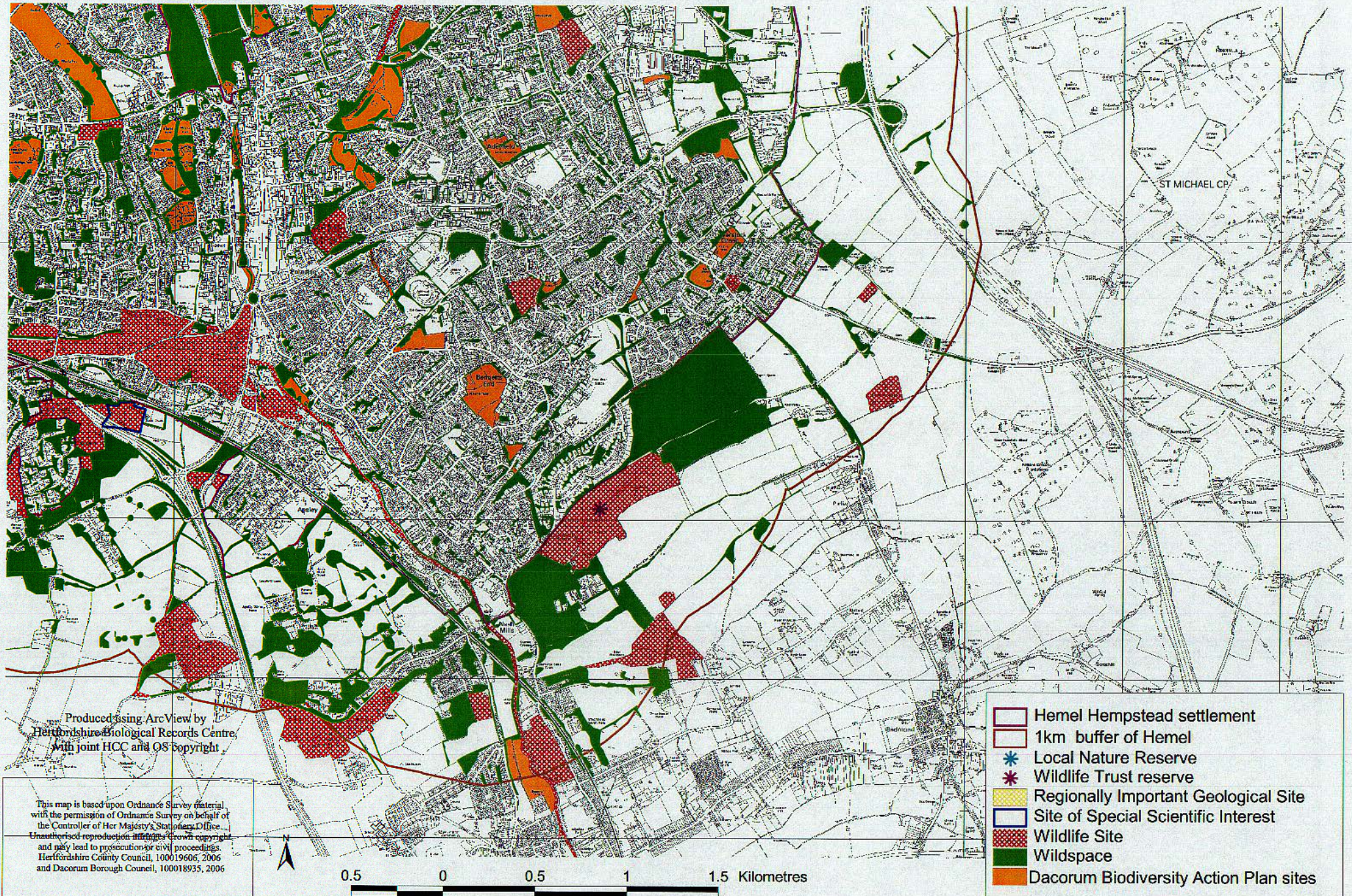
Produced using ArcView by  
Hertfordshire Biological Records Centre,  
with joint HCC and QS copyright

This map is based upon Ordnance Survey material  
with the permission of Ordnance Survey on behalf of  
the Controller of Her Majesty's Stationery Office.  
Unauthorised reproduction infringes Crown copyright  
and may lead to prosecution or civil proceedings.  
Hertfordshire County Council, 100019606, 2006  
and Dacorum Borough Council, 100018935, 2006

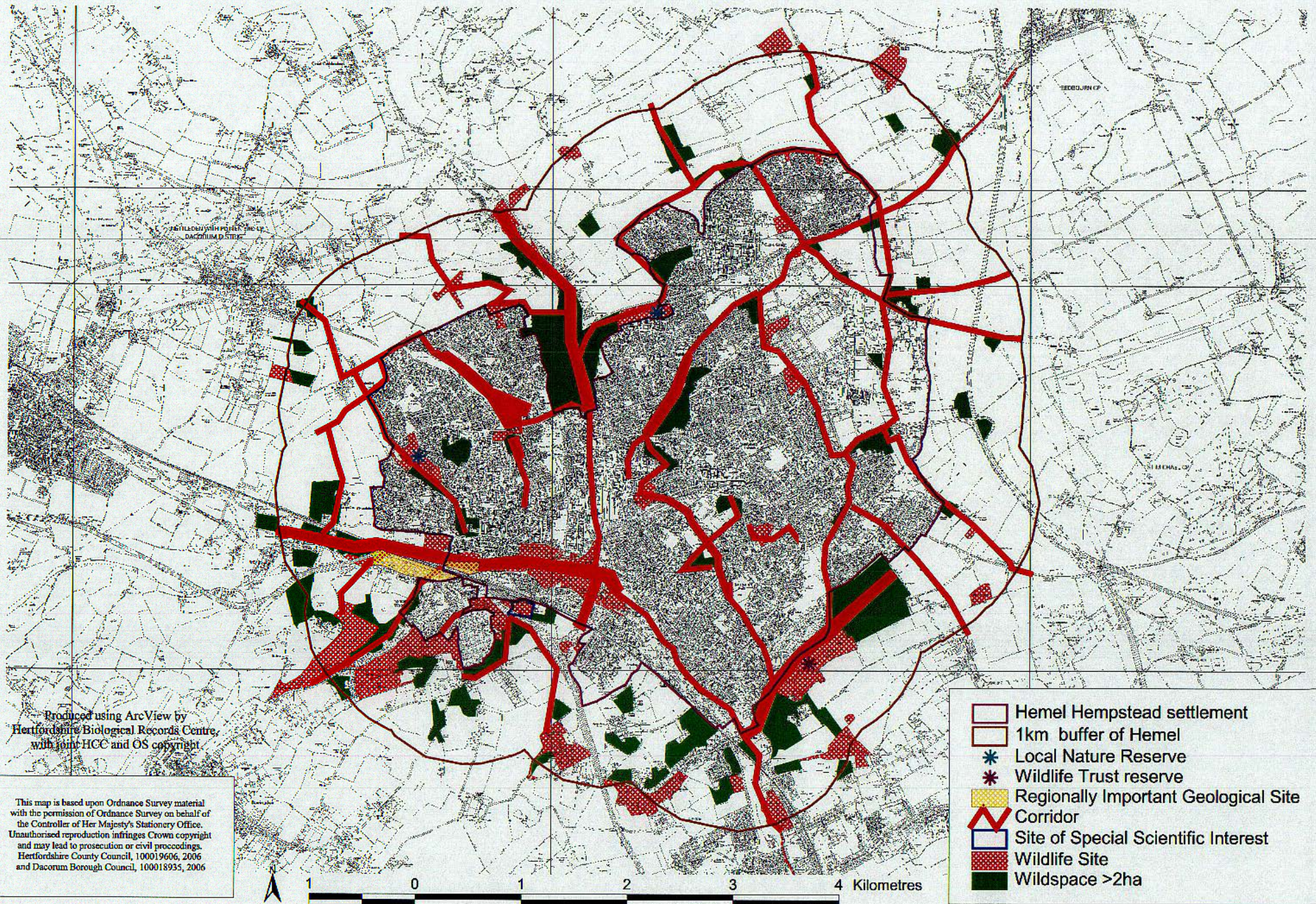
-  Hemel Hempstead settlement
-  1km buffer of Hemel
-  Local Nature Reserve
-  Wildlife Trust reserve
-  Regionally Important Geological Site
-  Site of Special Scientific Interest
-  Wildlife Site
-  Wildspace
-  Dacorum Biodiversity Action Plan sites



# Appendix 4.1 D Identified biodiversity resources, Hemel Hempstead and surrounds












## Appendix 4.2 Principal existing biodiversity corridors

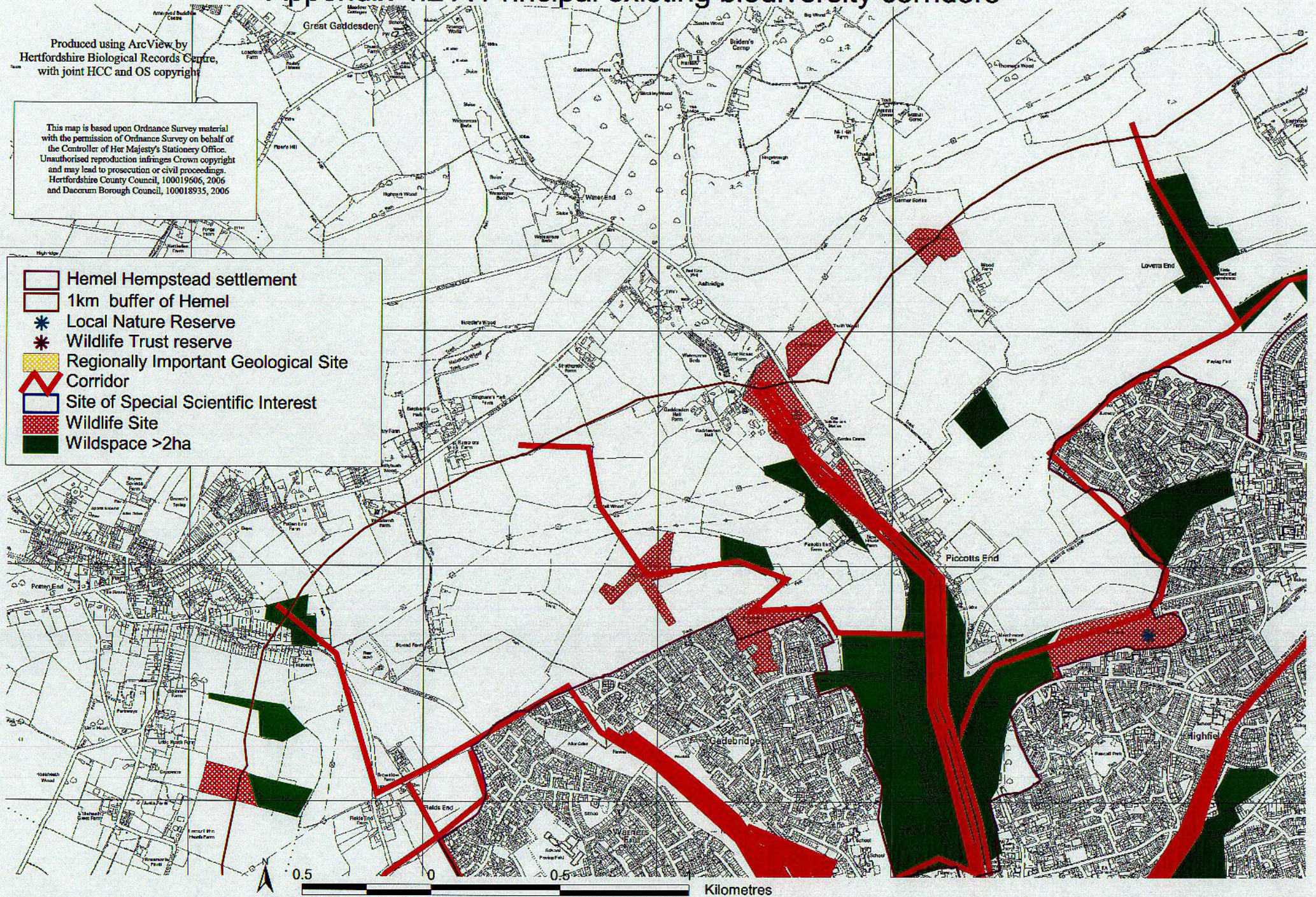


# Appendix 4.2 A Principal existing biodiversity corridors

Produced using ArcView by  
Hertfordshire Biological Records Centre,  
with joint HCC and OS copyright

This map is based upon Ordnance Survey material  
with the permission of Ordnance Survey on behalf of  
the Controller of Her Majesty's Stationery Office.  
Unauthorised reproduction infringes Crown copyright  
and may lead to prosecution or civil proceedings.  
Hertfordshire County Council, 100019606, 2006  
and Dacorum Borough Council, 100018935, 2006

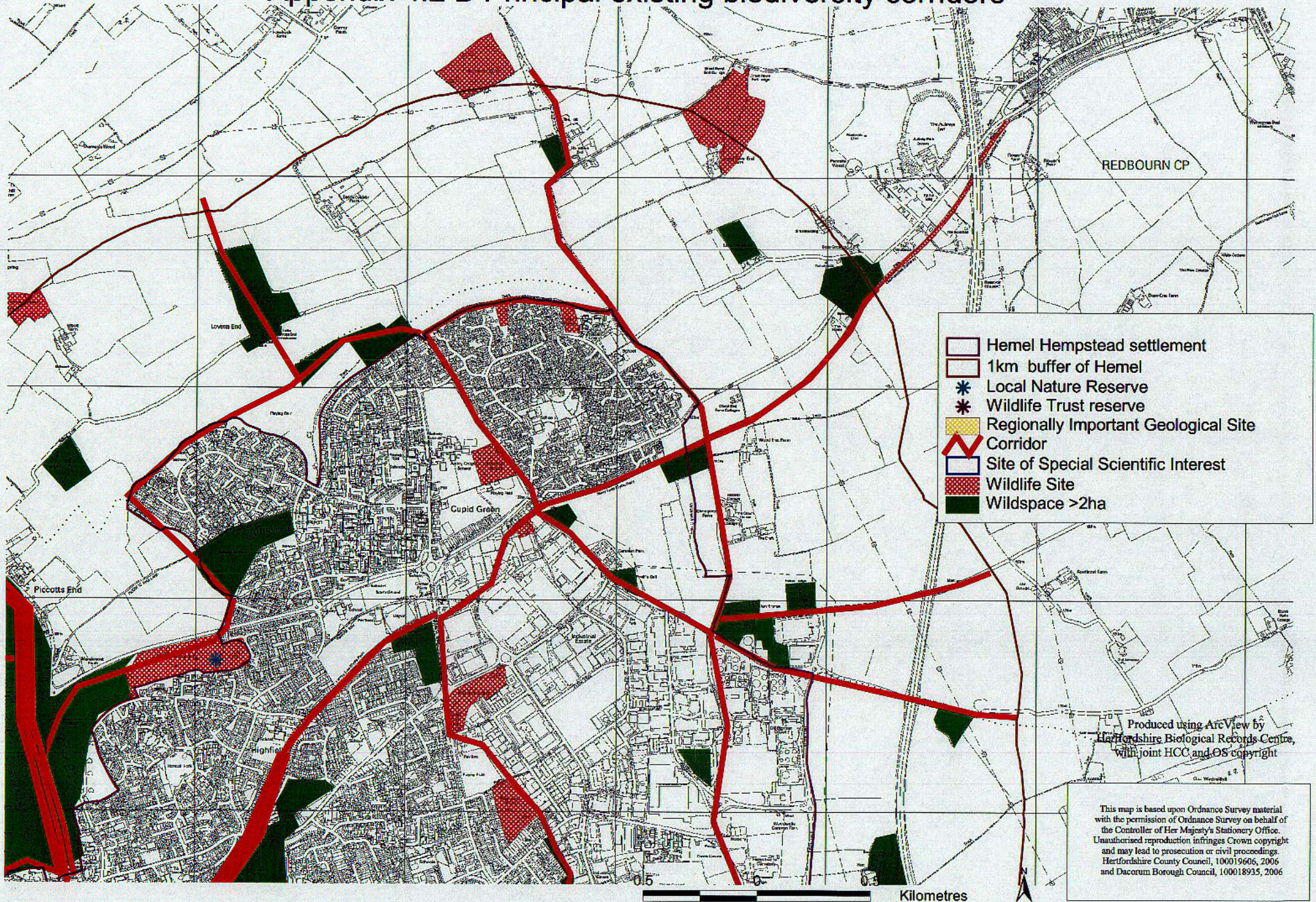
-  Hemel Hempstead settlement
-  1km buffer of Hemel
-  Local Nature Reserve
-  Wildlife Trust reserve
-  Regionally Important Geological Site
-  Corridor
-  Site of Special Scientific Interest
-  Wildlife Site
-  Wildspace >2ha



Kilometres



# Appendix 4.2 B Principal existing biodiversity corridors



## Appendix 4.2 C Principal existing biodiversity corridors

